



ECGS Rear Axle Bracket Kit for Ford 8.8" differential to 97-06 Jeep TJ

INSTALLATION INSTRUCTIONS

*ALL WORK TO BE DONE BY A KNOWLEDGEABLE PROFESSIONAL. EAST COAST GEAR SUPPLY SHALL NOT BE HELD RESPONSIBLE FOR ANY DAMAGES TO THIS KIT OR AXLE DUE TO MISINTERPRETATIONS OF THESE INSTRUCTIONS AND DRAWINGS. ORIGINAL AXLE DIMENSIONS MAY VARY. THESE PLANS ARE NOT TO SCALE

Your ECGS TJ Bracket Kit Contains:

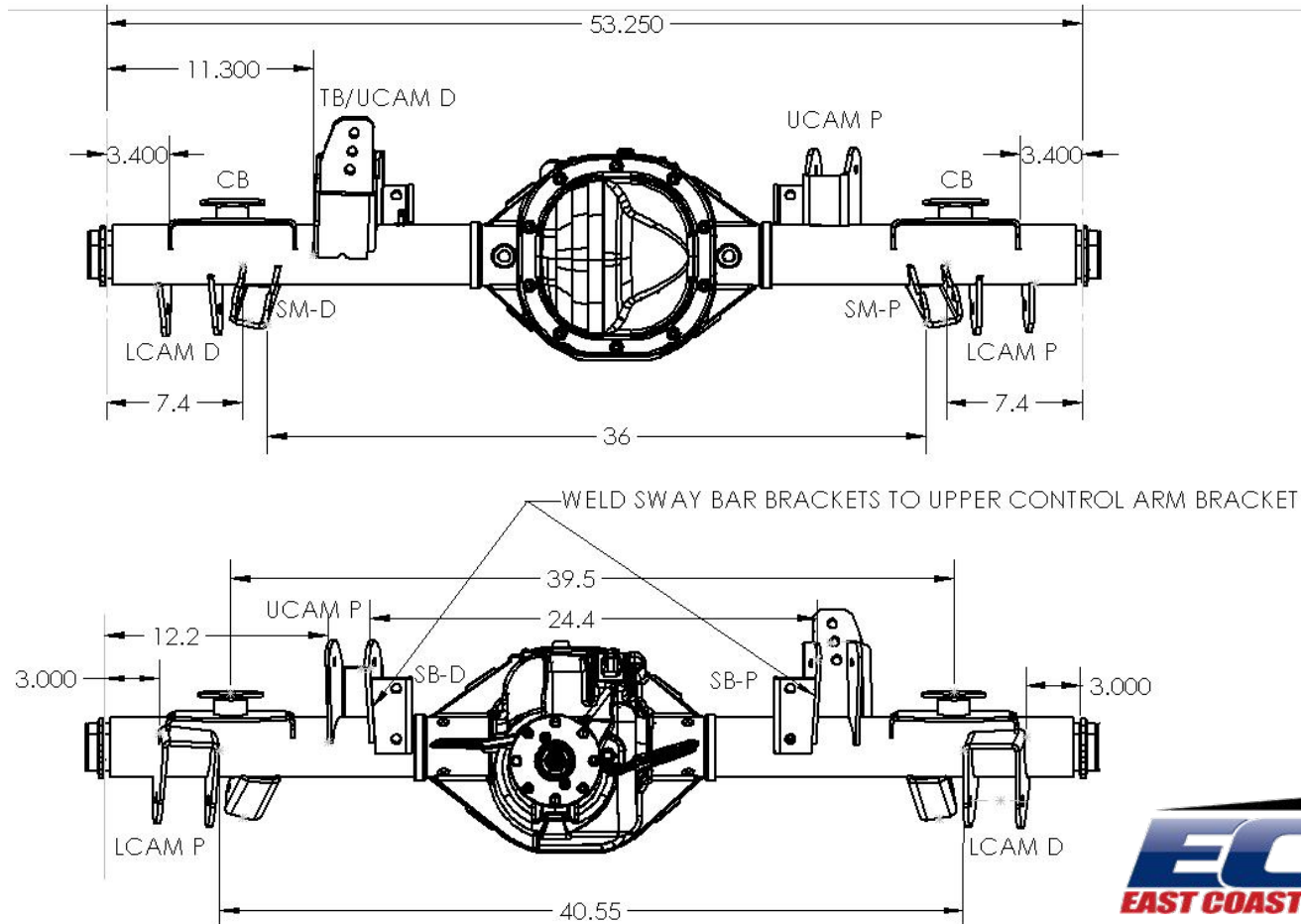
- Right Upper Control Arm Mount (**UCAM-P**)(1041)
- Left and Right Lower Control Arm Mounts (**LCAM-D, LCAM-P**)(1037,1038)
- Left and Right Shock Mounts (**SM-D, SM-P**) (1039,1040)
- Left and Right Sway Bar Mounts (**SB-D, SB-P**)(1046,1047)
- Two Coil Spring Buckets (**CB**)
- Hardware for Coil Spring Buckets
- Spring Retainer Plates for Coil Spring Buckets
- Trac Bar Mount/Left Upper Control Arm Mount (**TB/UCAM-D**)



- Brake line kit sold separately

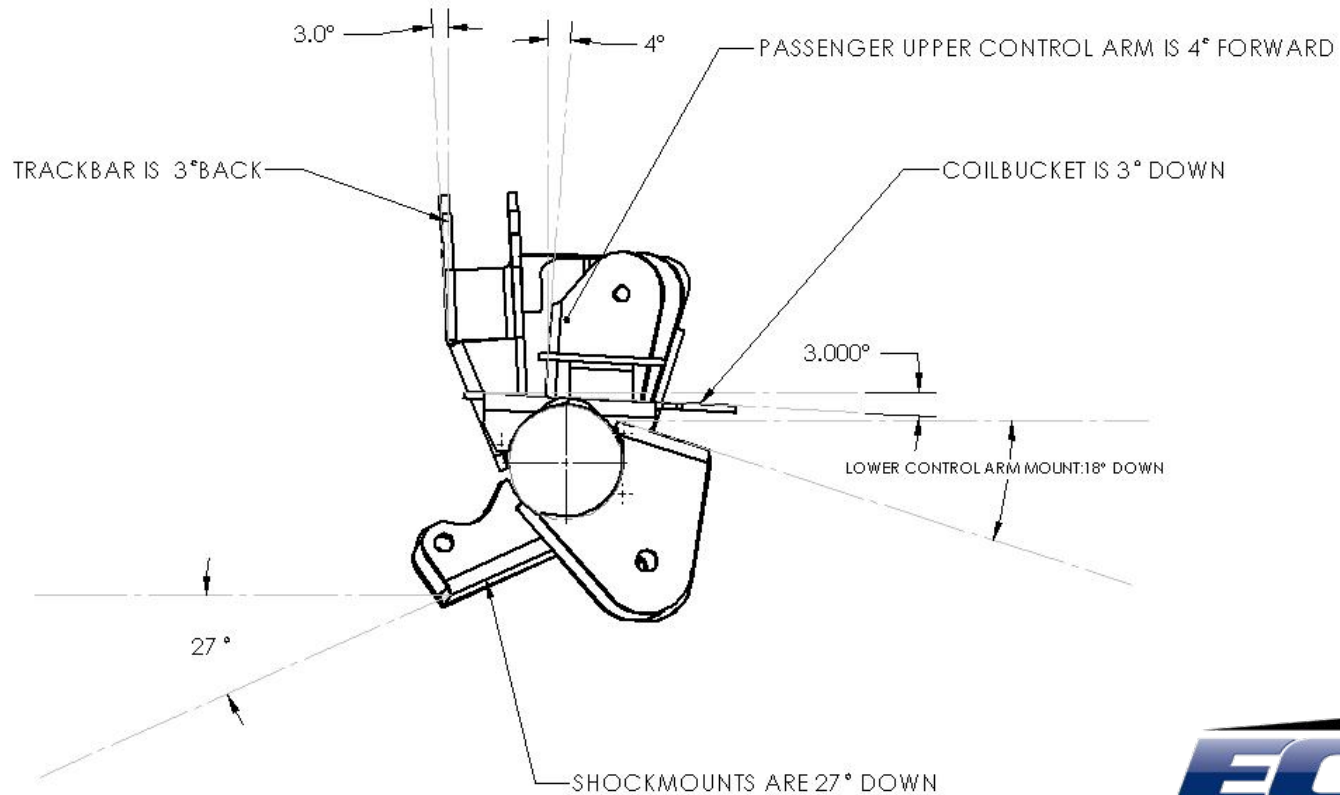
TJ F8.8 ECGS BRACKET DIAGRAMS

FIGURE: A



TJ F8.8 ECGS BRACKET DIAGRAMS

FIGURE: B



INSTALLATION INSTRUCTIONS



1. Start by checking to make sure doner axle is straight and not bent. Remove all old brackets. Make sure all surfaces to be welded are clean and free of rust and debris.
2. Weld the axle tubes to the differential housing.
3. Set the axle to the desired pinion angle. Use 3 jack stands to keep the axle stationary throughout the welding process. Pinion Angle Varies with Different lifts from 10-20 degrees.
4. Set and tack the lower control arm mounts 3 inches when measuring from the inside of the axle flange (**FIGURE A**). The lower control arm mounts will be angled 18 degrees down from horizontal when measuring from top face (**FIGURE B**). Inside edge to inside edge should measure 40.55 inches (**FIGURE A**). Fully weld the top edge of the lower control arm mounts as this edge will be covered later by the coil buckets.
5. Set the TB/UCAM-D 11.3 inches from the inside of the axle flange (**FIGURE A**) and tilted 3 degrees back (**FIGURE B**). Inside edge to inside edge of the UCAM's should measure 24.4 inches (**FIGURE A**). Tack into place. Fully weld seam closest to differential housing.

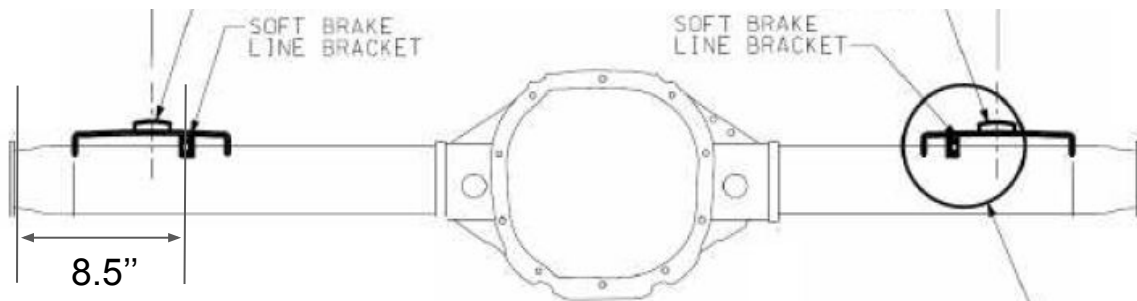
INSTALLATION INSTRUCTIONS



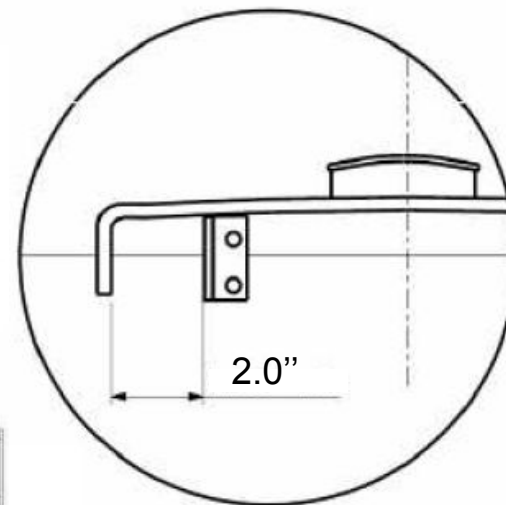
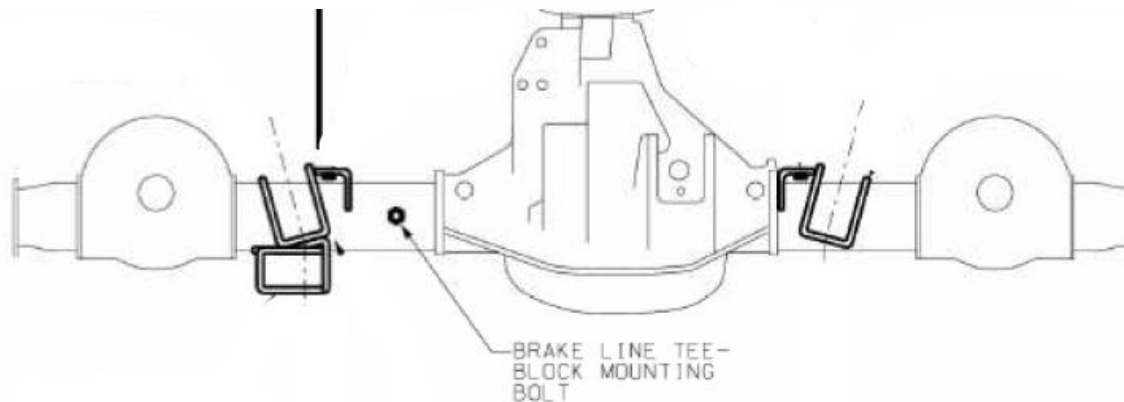
6. Set the UCAM-P 12.2 inches from the inside of the axle flange (**FIGURE A**) and tilted 4 degrees forward (**FIGURE B**). Inside edge to inside edge of the UCAM's should measure 24.4 inches (**FIGURE A**). Tack into place. Fully weld seam closest to differential housing.
7. Place SB-D and SB-P and align inner edges of UCAM's. Tack in place
8. Position shock mounts 7.4 inches from the inside of the axle flange (**FIGURE A**). Position the bottom face of the shock mounts 27 degrees downward (**FIGURE B**). Inside edge to inside edge should measure 36 inches (**FIGURE A**). Tack into place
9. Position Coil Buckets 3.4 inches from the inside of the axle flange (**FIGURE A**). You will have to grind the outside front corners off to fit with the lower control arm mounts. Position the top face of the coil buckets 3 degrees down (**FIGURE B**). Center to center should measure 39.5 inches (**FIGURE A**). Tack into place
10. Fully weld all brackets into place.
11. Open the below link to see a quick video of a completed Ford 8.8 with ECGS Brackets:

<https://www.youtube.com/watch?v=ssXWzhLwxLg&feature=youtu.be>

Brake Line Mounting Points



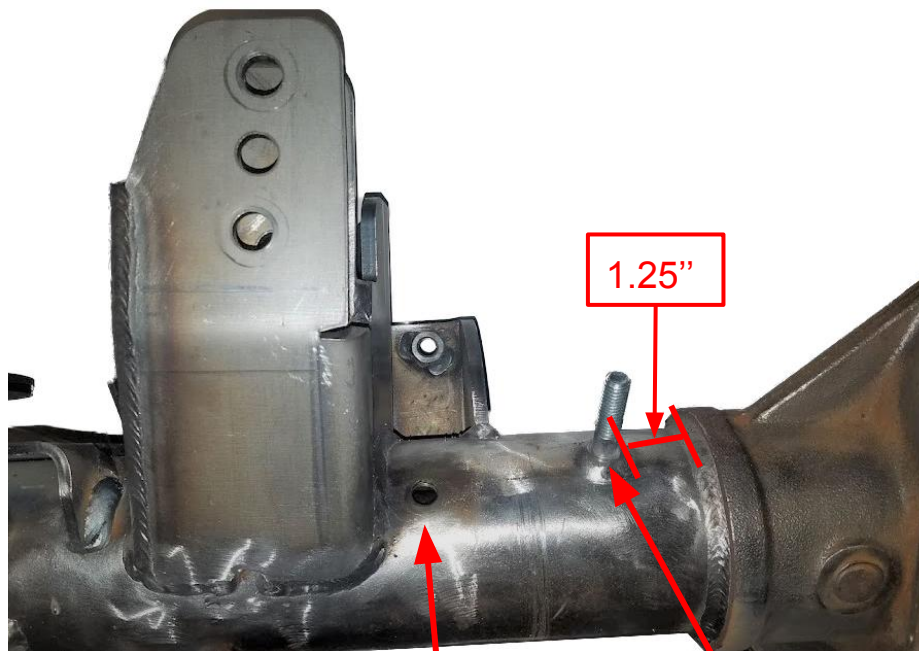
SEE SOFT
BRAKE LINE
ENLARGEMENT



**SOFT BRAKE
LINE BRACKET
ENLARGEMENT**

Brake Line Mounting Points

DRIVERS SIDE

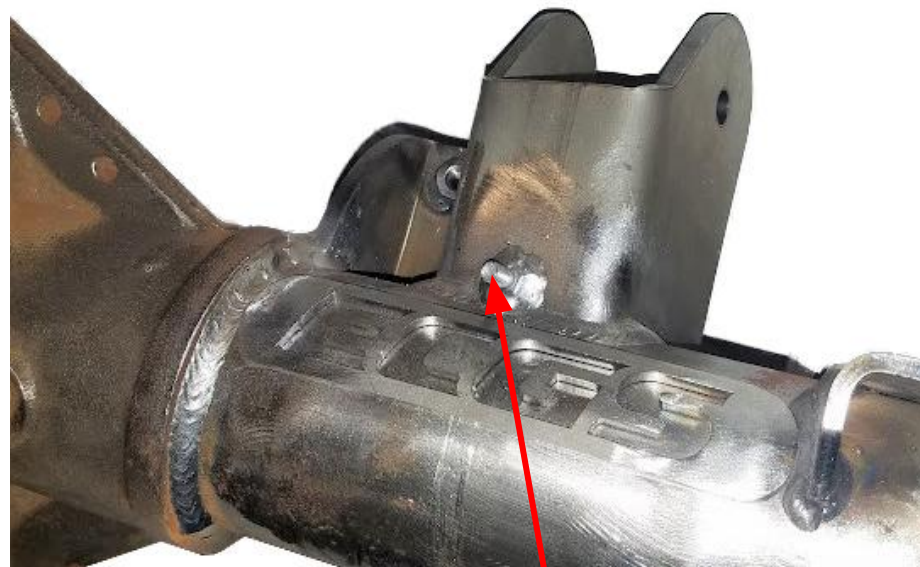


1.25"

FACTORY BREATHER HOLE

BRAKE LINE TEE MOUNTING STUD

PASSENGER SIDE



HARD LINE MOUNTING POINT
(CENTERED ON UCAM)