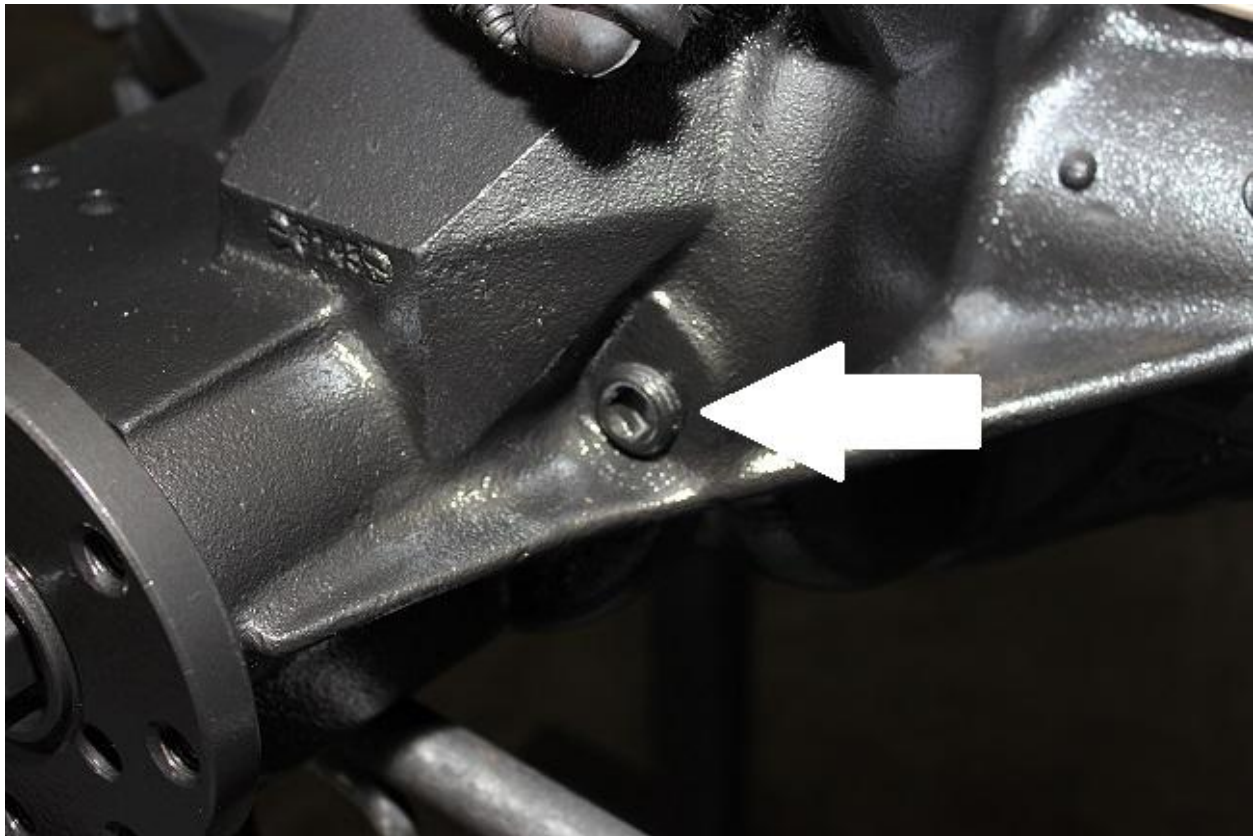




Ford 8.8 Fill Plug Location

Pictured below is the fill plug for the Ford 8.8, its location is indicated by a white arrow. Please note this is on the front of the differential located near the pinion. The 8.8 must be filled from this location, not from an aftermarket differential cover.



Failure to fill from this location will cause over-filling of the differential and possible damage to the axle and void warranty!! Or pending pinion angle, under filling of the axle. All ford 8.8 axles should have 2.85-3 quarts. If you have a pinion angle above 15 degrees 3.5 quarts is recommended however it may release some fluid out of the breather.